



SPARE PARTS CATALOGUE

GLADIATOR

6 m; 5 m; 4.5 m; 3 m



SIEGE SOCIAL & USINE 70210 POLAINCOURT

Phone : 03.84.92.82.82

Fax : 03.84.92.94.25

www.quivogne.fr

USINE ZI 70500 JUSSEY

Phone : 03.84.68.04.00

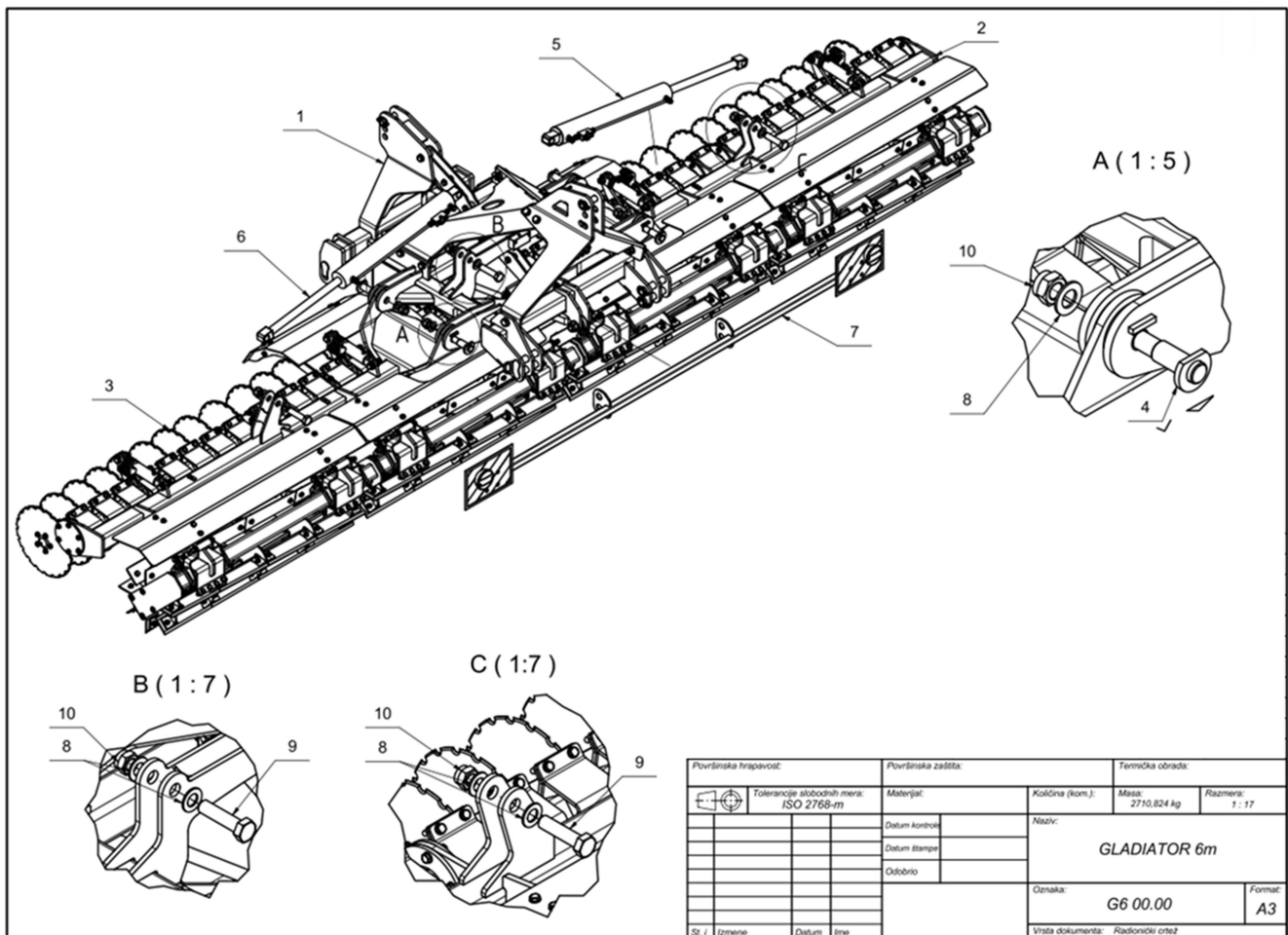
Fax : 03.84.92.26.59

E-mail: contact@quivogne.fr

Factory of JUSSEY

BOOK : 2019

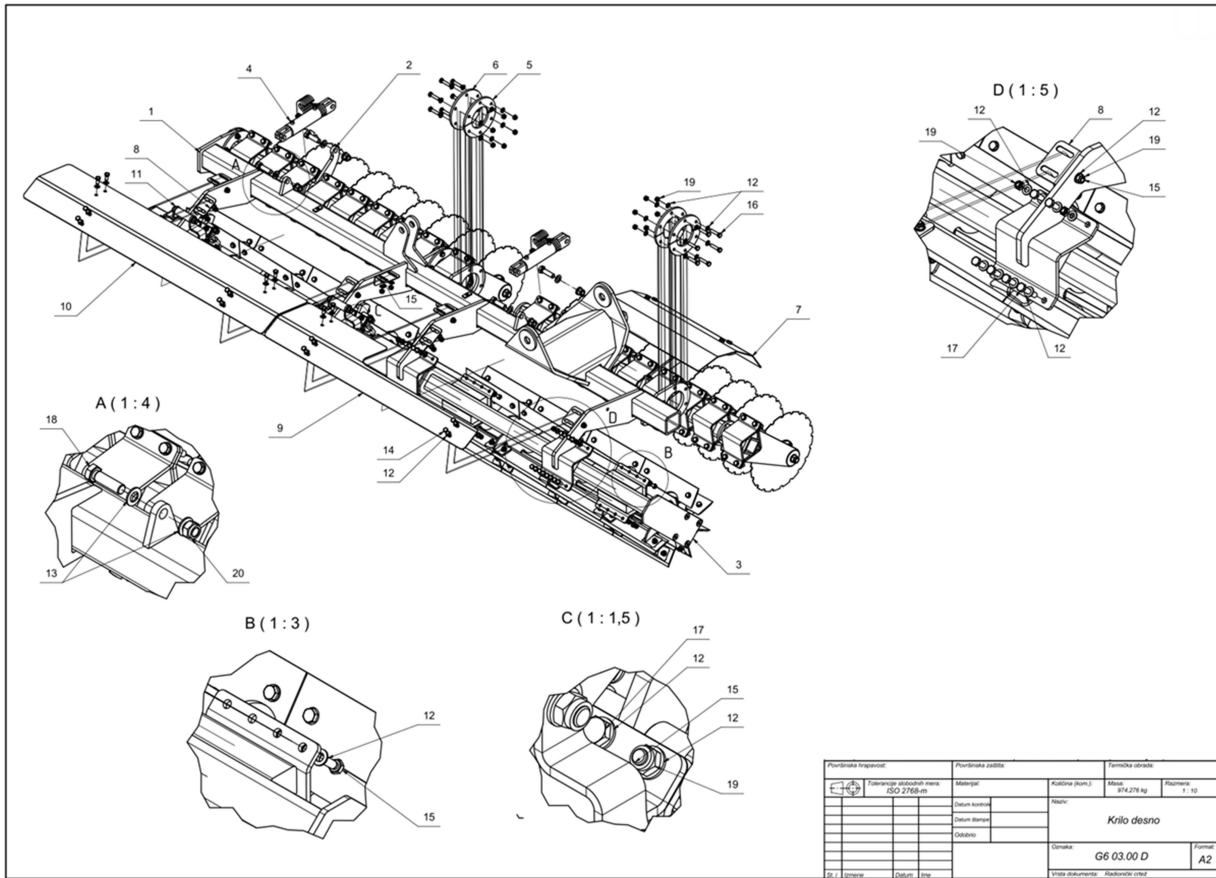
GLADIATOR 6 M



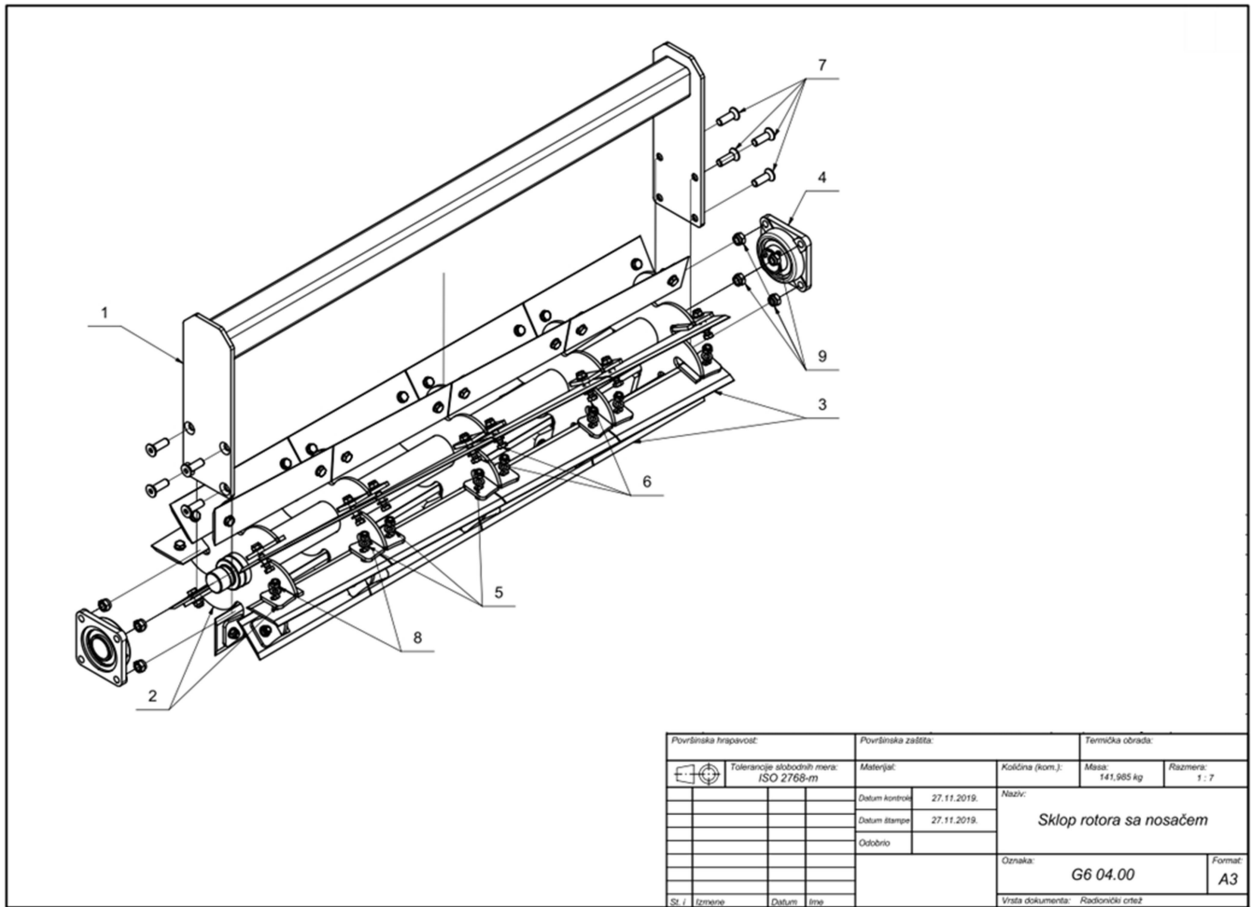
Površinska hrapavost:		Površinska zaštita:		Termička obrada:	
Tolerancije slobodnih mera: ISO 2768-m		Materijal:		Količina (kom.):	Masa: 2710,824 kg
		Datum kontrole:		Naziv: GLADIATOR 6m	
		Datum štampa:		Oznaka: G6 00.00	
		Odobrio:		Format: A3	
Str. / izmena		Datum / lista		Vrsta dokumenta: Radionički crtež	

Poz	Description	Code	Quantity
1	Main frame and front hitch	G6 01.00/G6 02.00	1
2	Left wing	G6 03.00 L	1
3	Right wing	G6 03.00 D	1
4	Shaft for wings	G6 00.03.00	4
5	Hydraulic cylinder for transport position-left	G6 10.01 L	1
6	Hydraulic cylinder for transport position-right	G6 10.01 D	1
7	Lighting foldable complete	G6 11.00	1
8	Washer M30	DIN 125	12
9	Hex-Head Bolt M30 x 120	DIN 931	4
10	Hex Nut M30	DIN 985	8

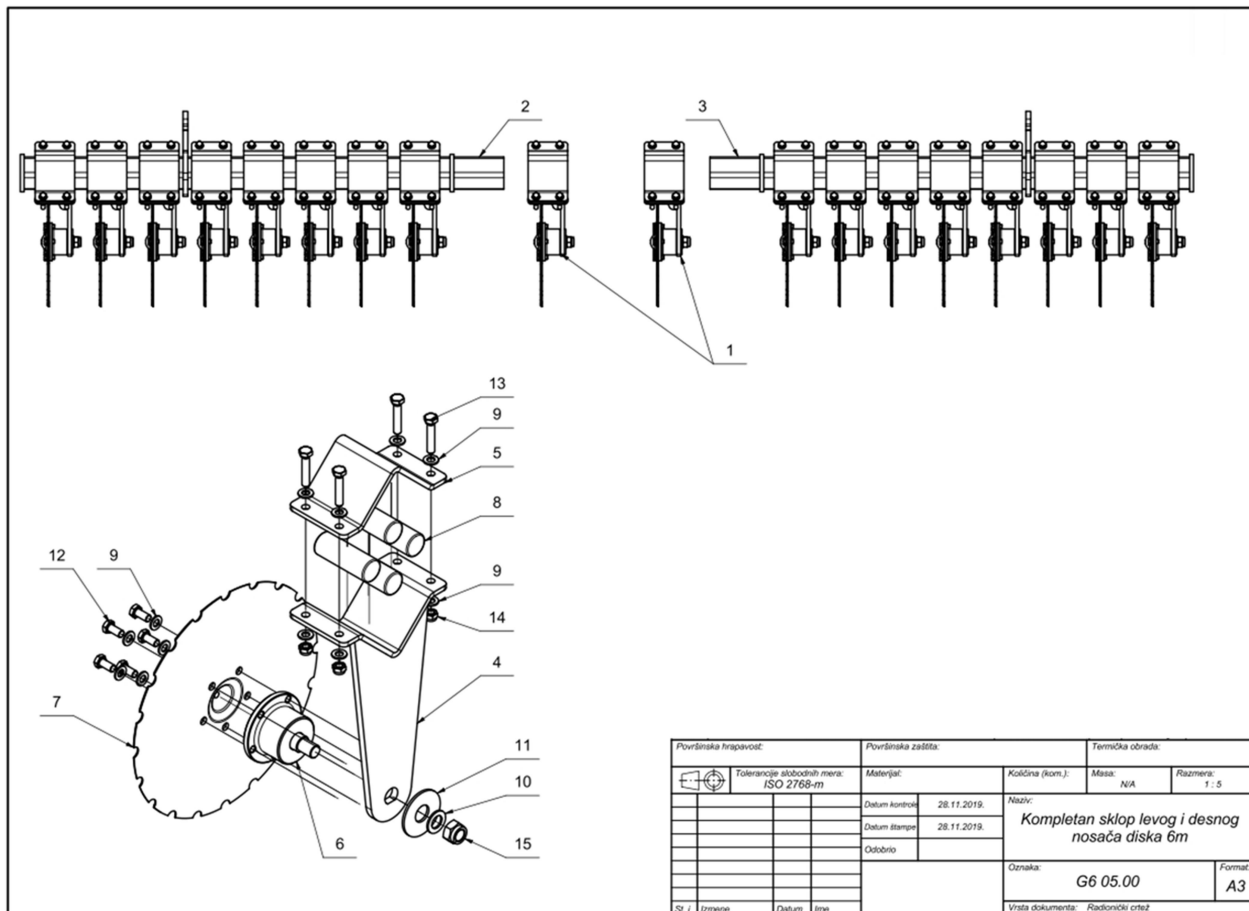
22	Front suspension chain	G6 12.04	2
23	Hydraulic twin hose clamp	G6 12.02	2
24	Flow divider	G6 12.03	1
25	Washer M6	DIN 125	4
26	Washer M10	DIN 125	4
27	Washer M12	DIN 125	2
28	Washer M16	DIN 125	16
29	Washer M20	DIN 125	4
30	Washer M22	DIN 125	20
31	Washer M24	DIN 125	4
32	Washer M30	DIN 125	2
33	Hex-Head Bolt M6 x 65	DIN 933	2
34	Hex-Head Bolt M8 x 50	DIN 933	2
35	Hex-Head Bolt M10 x 40	DIN 933	2
36	Hex-Head Bolt M16 x 85	DIN 931	4
37	Hex-Head Bolt M16 x 95	DIN 931	4
38	Hex-Head Bolt M20 x 120	DIN 931	2
39	Hex-Head Bolt M22 x 65	DIN 933	10
40	Hex-Head Bolt M24 x 65	DIN 933	2
41	Hex-Head Bolt M30 x 120	DIN 931	1
42	Hex Nut M6	DIN 985	2
43	Hex Nut M10	DIN 985	2
44	Hex Nut M12	DIN 985	2
45	Hex Nut M16	DIN 985	8
46	Hex Nut M20	DIN 985	2
47	Hex Nut M22	DIN 985	10
48	Hex Nut M24	DIN 985	2
49	Hex Nut M30	DIN 985	1



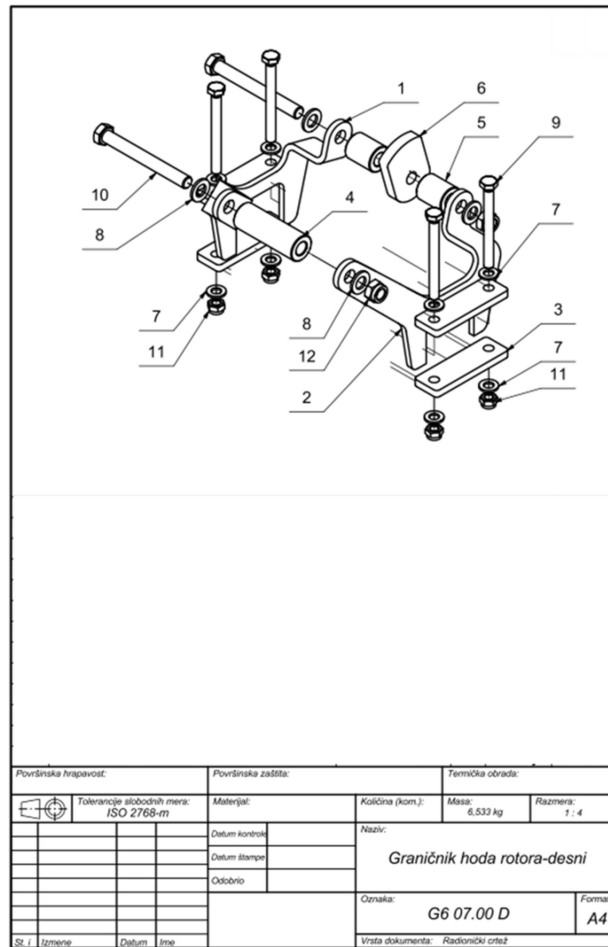
Poz	Description	Code	Quantity
1	Right wing – welded part	G6 03.00 D	1
2	Disc carrier assembly	G6 05.00 D	2
3	Rotor assembly with carrier	G6 04.00	2
4	Hydraulic cylinder for disc depth-right	G6 10.02 D	2
5	Half flange	G6 00.02	12
6	Side cover/end flange	G6 00.01	2
7	Rear right fender	G6 08.06.00 D	1
8	The lid carrier	G6 08.01	7
9	Right inner cover	G6 08.04	1
10	Right cover	G6 08.02	1
11	Rotor stroke limiter	G6 07.00	4
12	Washer M12	DIN 125	90
13	Washer M20	DIN 125	8
14	Hex-Head Bolt M12 x 25	DIN 933	14
15	Hex-Head Bolt M12 x 35	DIN 933	7
16	Hex-Head Bolt M12 x 55	DIN 933	24
17	Hex-Head Bolt M12 x 60	DIN 933	24
18	Hex-Head Bolt M20 x 70	DIN 933	4
19	Hex Nut M12	DIN 985	45
20	Hex Nut M20	DIN 985	4



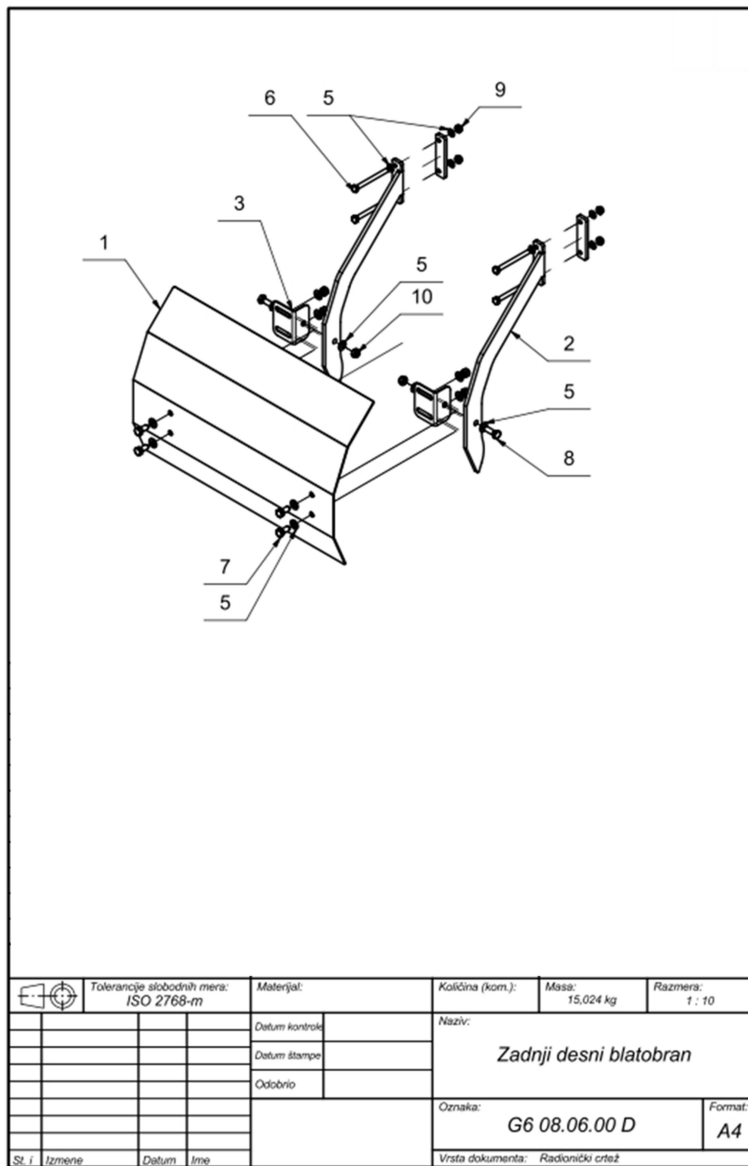
Poz	Description	Code	Quantity
1	Rotor carrier	G6 04.01.00	1
2	Rotor - welded assembly	G6 04.02.02.01	1
3	Knife for rotor	G6 04.02.01	32
4	Bearing UCF_210	G6 04.02.02	2
5	Washer M12	DIN 125	128
6	Hex-Head Bolt M12 x 35	DIN 933	64
7	Countersunk Screw M16 x 50	DIN 7991	8
8	Hex Nut M12	DIN 985	64
9	Hex Nut M16	DIN 985	8



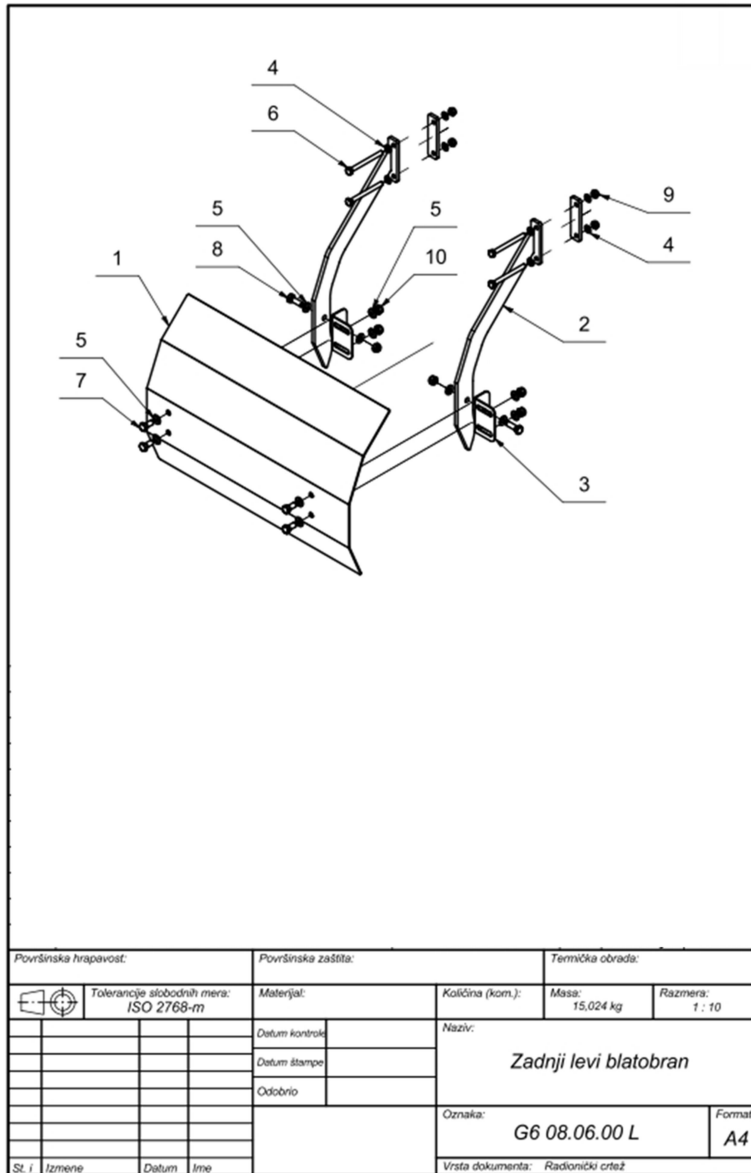
Poz	Description	Code	Quantity
1	Disc carrier	G6 06.00	36
2	Disc carrier assembly - D	G6.05.00 D	2
3	Disc carrier assembly - L	G6.05.00 L	2
4	Disc carrier - welded assembly	G6 06.01.00	1
5	Disc mounting plate	G6 06.01.01	1
6	Bearing for disc	G6 06.04	1
7	Disc	G6 06.03	1
8	Rubber Ø40 -110 mm	G6 06.02	4
9	Washer M12	DIN 125	13
10	Washer M22	DIN 125	1
11	Wide plain washer M27	DIN 9021	1
12	Hex-Head Bolt M12 x 25	DIN 933	5
13	Hex-Head Bolt M12 x 60	DIN 933	4
14	Hex Nut M12	DIN 985	4
15	Hex Nut M22	DIN 985	1



Poz	Description	Code	Quantity
1	Welded rotor stroke limiter-right	G6 07.02.00 D	1
2	Welded rotor stroke limiter-left	G6 07.02.00 L	1
3	Plate 125x40x10	G6 07.02.01	2
4	Bushing Ø35 x Ø17,5 - 100	G6 07.01	1
5	Bushing Ø35 x Ø17,5 - 42,5	G6 07.03	2
6	Plate Ø114 x Ø16,5 x 15	G6 07.04	1
7	Washer M12	DIN 125	8
8	Washer M16	DIN 125	4
9	Hex-Head Bolt M12 x 120	DIN 933	4
10	Hex-Head Bolt M16 x 140	DIN 931	2
11	Hex Nut M12	DIN 985	4
12	Hex Nut M16	DIN 985	2

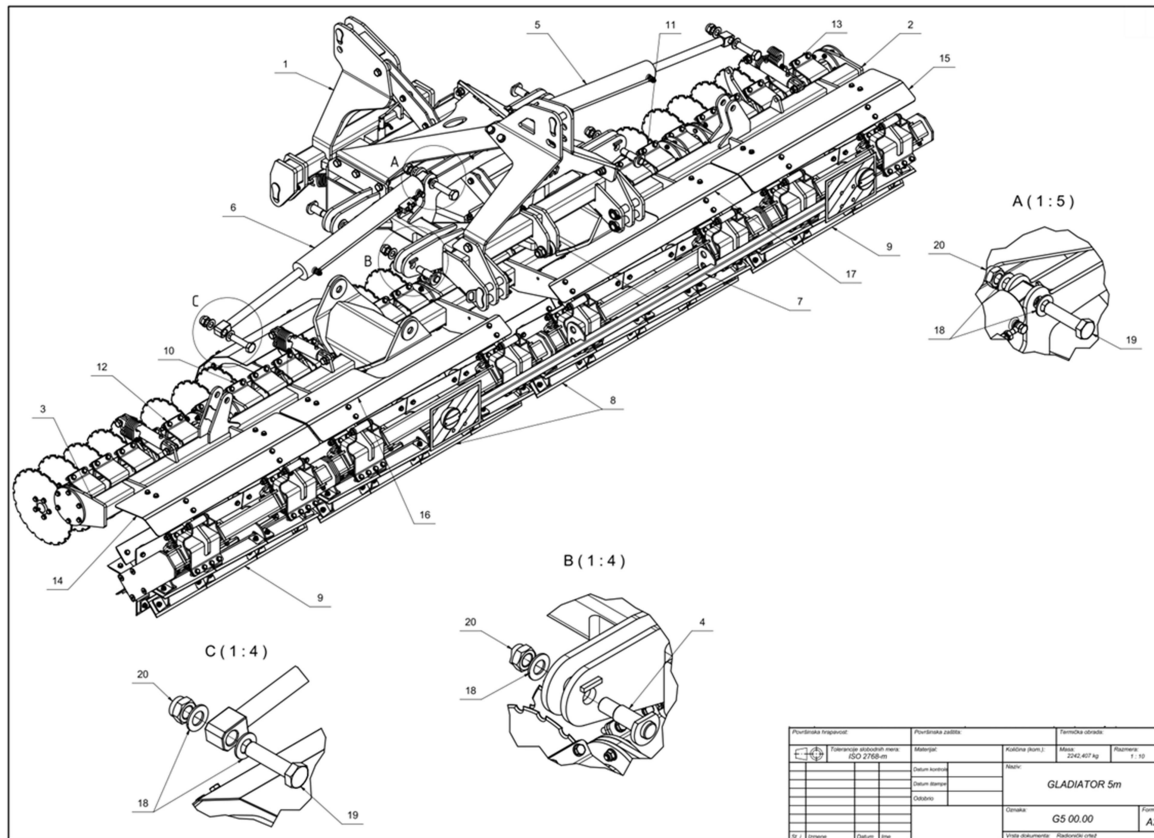


Poz	Description	Code	Quantity
1	Rear right cover plate	G6 08.06.02	1
2	Rear right cover holder	G6 08.06.03.00 D	2
3	Cover holder	G6 08.01	2
4	Washer M10	DIN 125	8
5	Washer M12	DIN 125	12
6	Hex-Head Bolt M10 x 120	DIN 933	4
7	Hex-Head Bolt M12 x 25	DIN 933	4
8	Hex-Head Bolt M12 x 35	DIN 933	2
9	Hex Nut M10	DIN 985	4
10	Hex Nut M12	DIN 985	6

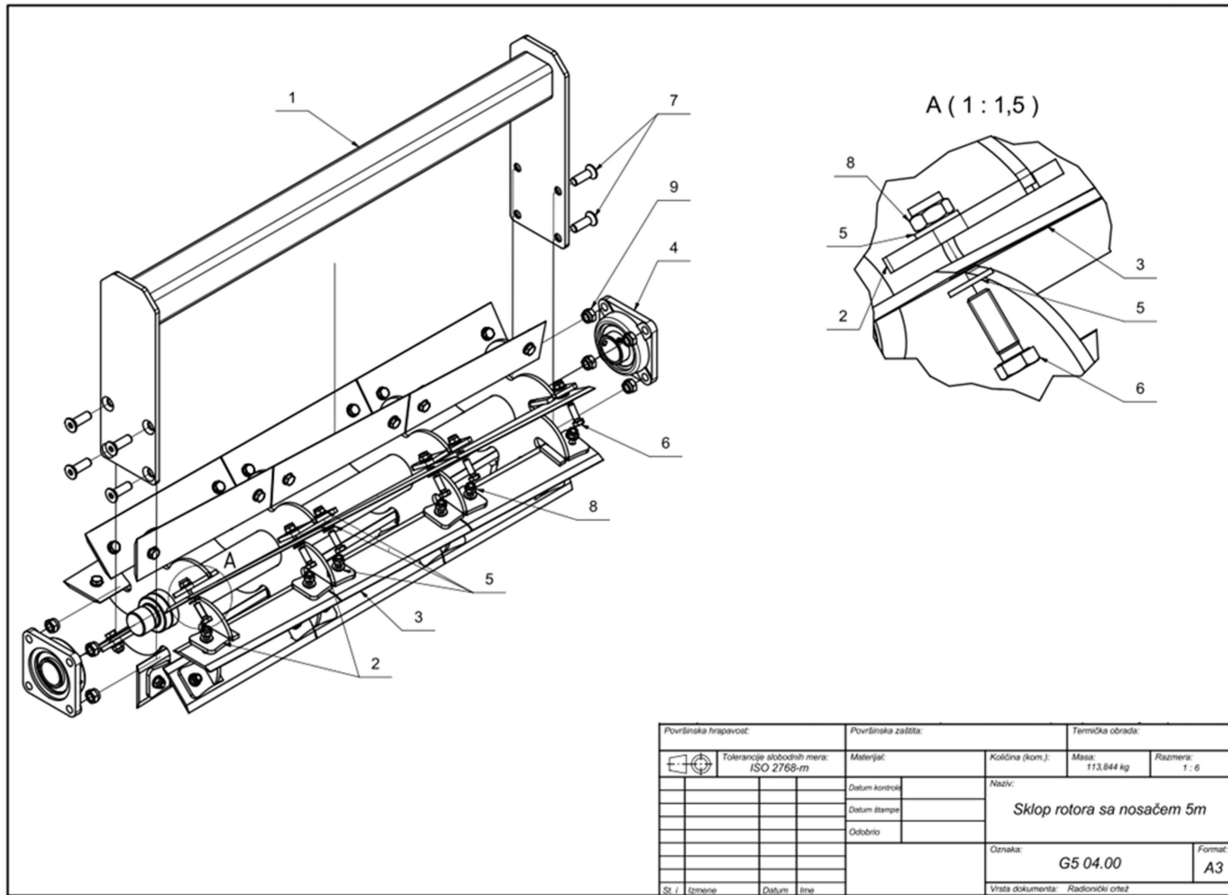


Poz	Description	Code	Quantity
1	Rear left cover plate	G6 08.06.01	1
2	Rear left cover holder	G6 08.06.03.00 L	2
3	Cover holder	G6 08.01	2
4	Washer M10	DIN 125	8
5	Washer M12	DIN 125	12
6	Hex-Head Bolt M10 x 120	DIN 933	4
7	Hex-Head Bolt M12 x 25	DIN 933	4
8	Hex-Head Bolt M12 x 35	DIN 933	2
9	Hex Nut M10	DIN 985	4
10	Hex Nut M12	DIN 985	6

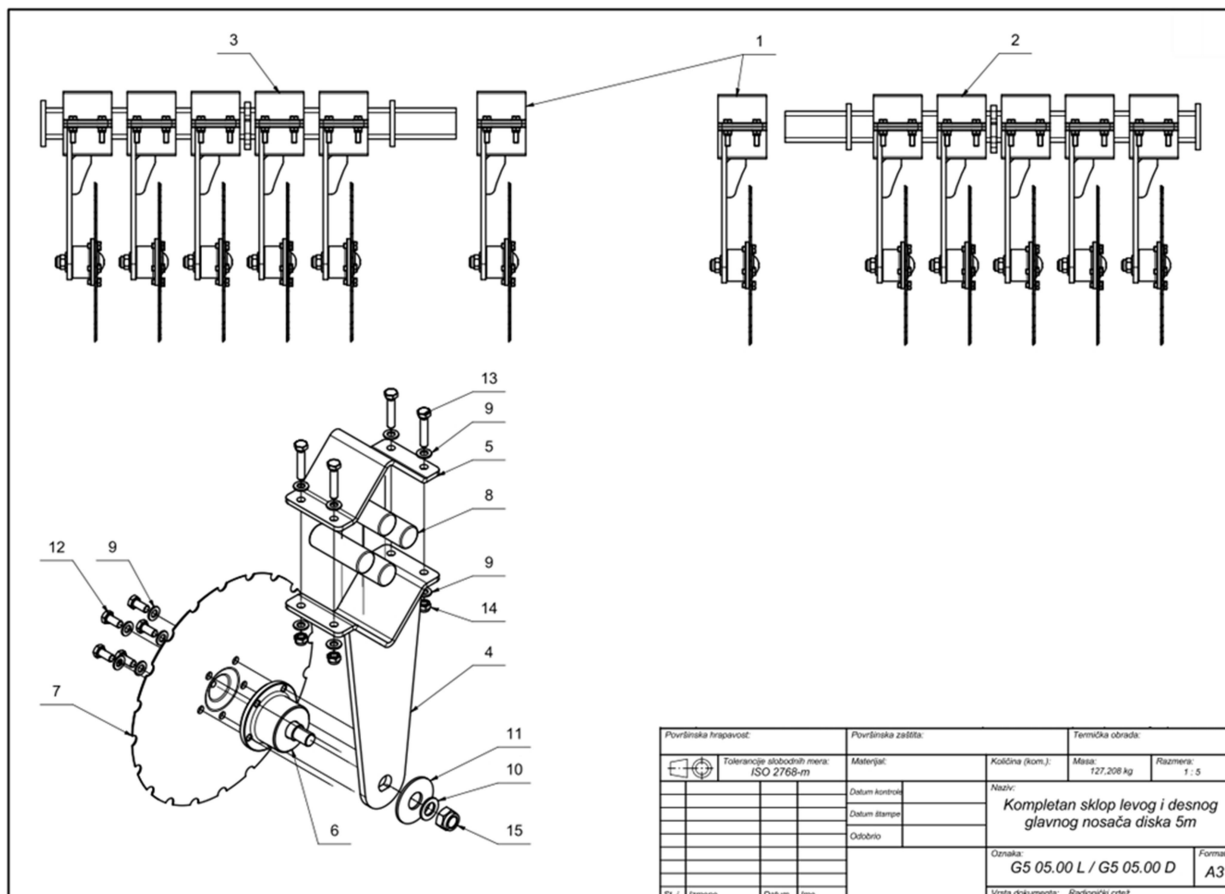
GLADIATOR 5 M



Poz	Description	Code	Quantity
1	Main frame and front hitch	G6 01.00/G6 02.00	1
2	Left wing	G5 03.00 L	1
3	Right wing	G5 03.00 D	1
4	Shaft for wings	G6 00.03.00	4
5	Hydraulic cylinder for transport position-left	G6 10.01 L	1
6	Hydraulic cylinder for transport position-right	G6 10.01 D	1
7	Lighting foldable complete	G6 11.00	1
8	Rotor assembly with carrier 6m	G6 04.00	2
9	Rotor assembly with carrier 5m	G5 04.00	2
10	Right disc carrier assembly 6m	G6 05.00 D	1
11	Left disc carrier assembly 6m	G6 05.00 L	1
12	Right disc carrier assembly 5m	G5 05.00 D	1
13	Left disc carrier assembly 5m	G5 05.00 L	1
14	Right cover	G6 08.02	1
15	Left cover	G6 08.03	1
16	Right inner cover	G6 08.04	1
17	Left inner cover	G6 08.05	1
18	Washer M30	DIN 125	12
19	Hex-Head Bolt M30 x 120	DIN 931	4
20	Hex Nut M30	DIN 985	8

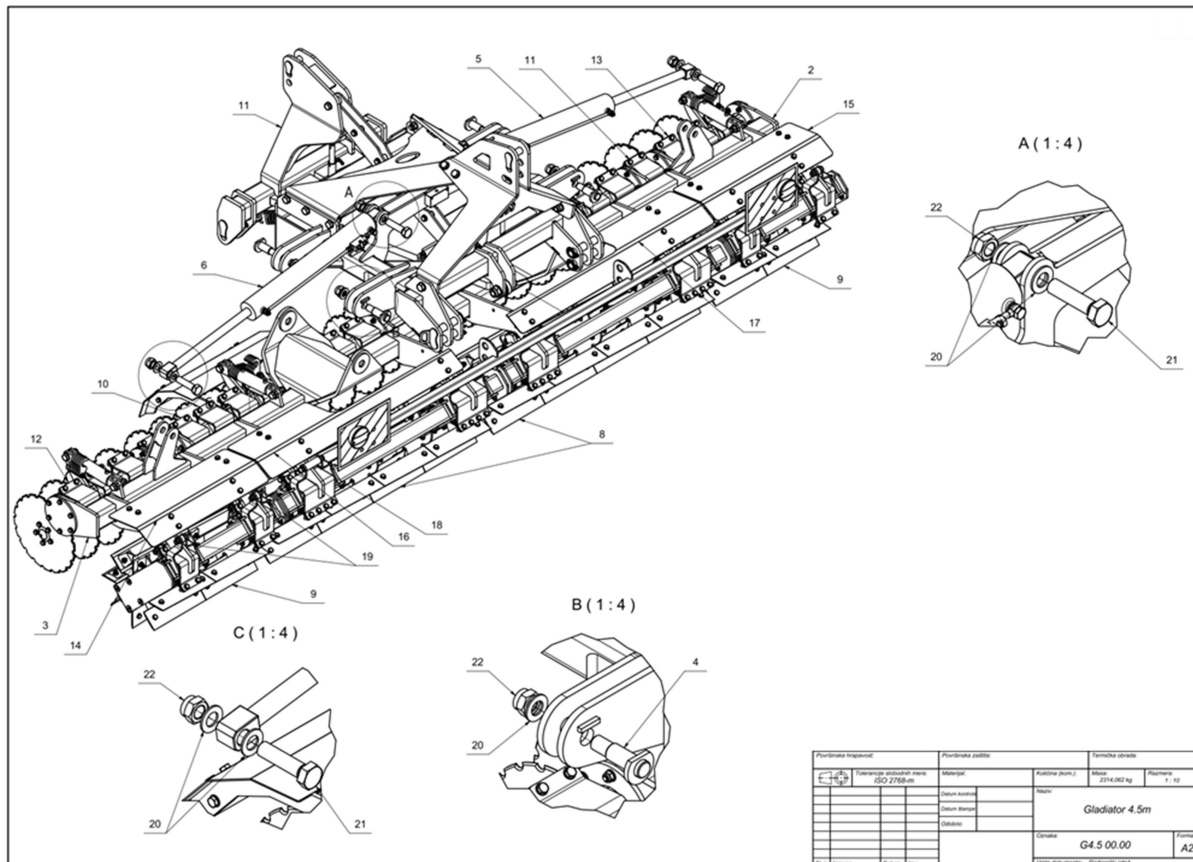


Poz	Description	Code	Quantity
1	Rotor carrier 5m	G5 04.01.00	1
2	Rotor - welded assembly 5m	G5 04.02.02.01	1
3	Knife for rotor	G6 04.02.01	24
4	Bearing UCF_210	G6 04.02.02	2
5	Washer M12	DIN 125	96
6	Hex-Head Bolt M12 x 35	DIN 933	48
7	Countersunk Screw M16 x 50	DIN 7991	8
8	Hex Nut M12	DIN 985	48
9	Hex Nut M16	DIN 985	8

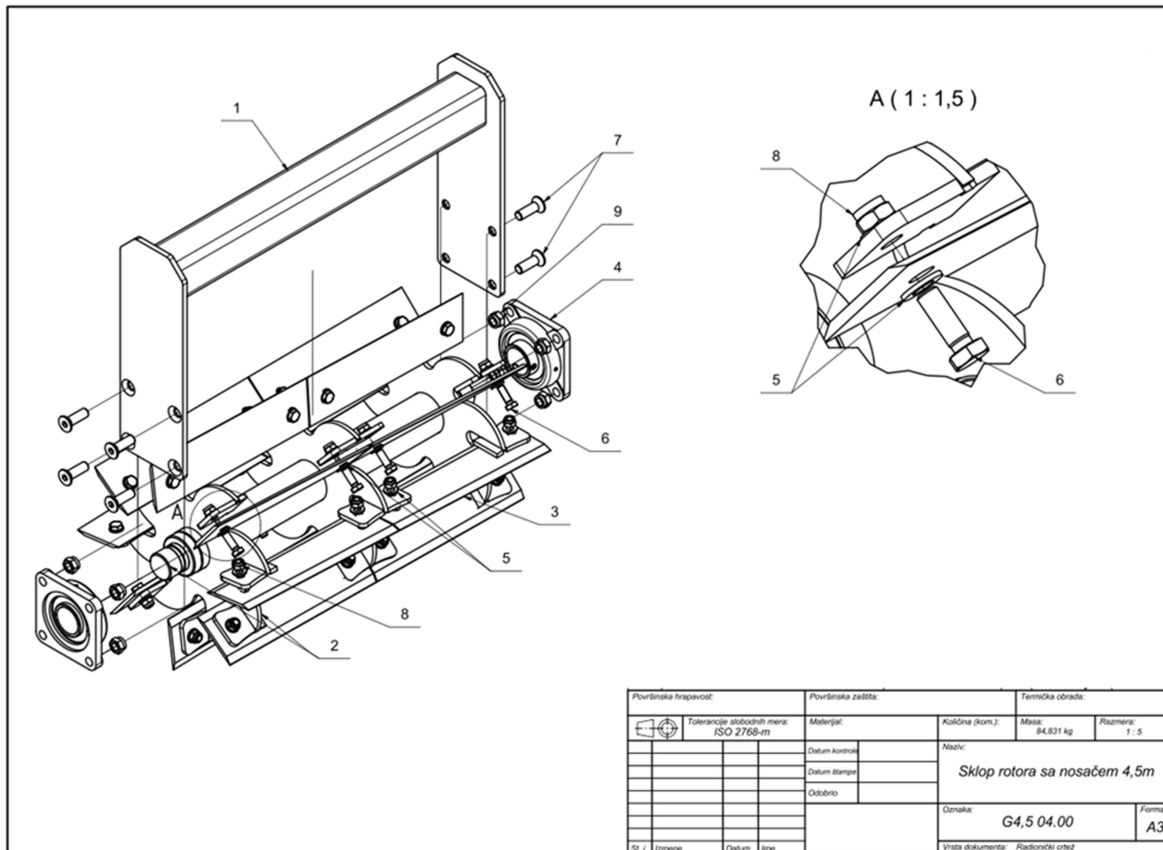


Poz	Description	Code	Quantity
1	Disc carrier	G6 06.00	30
2	Disc carrier assembly - D	G5 05.00 D	1
3	Disc carrier assembly - L	G5 05.00 L	1
4	Disc carrier - welded assembly	G6 06.01.00	1
5	Disc mounting plate	G6 06.01.01	1
6	Bearing for disc	G6 06.04	1
7	Disc	G6 06.03	1
8	Rubber Ø40 -110 mm	G6 06.02	4
9	Washer M12	DIN 125	13
10	Washer M22	DIN 125	1
11	Wide plain washer M27	DIN 9021	1
12	Hex-Head Bolt M12 x 25	DIN 933	5
13	Hex-Head Bolt M12 x 60	DIN 933	4
14	Hex Nut M12	DIN 985	4
15	Hex Nut M22	DIN 985	1

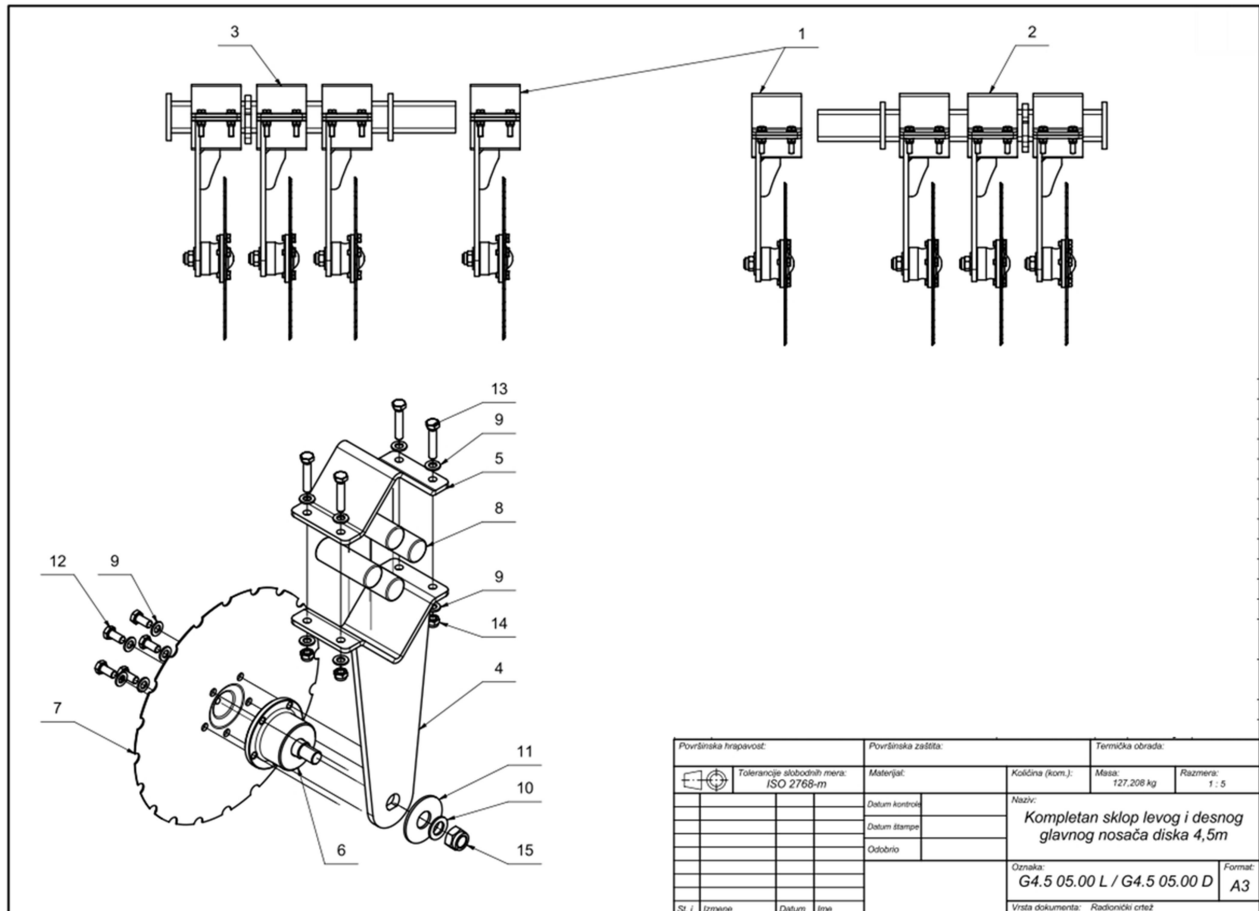
GLADIATOR 4.5 m



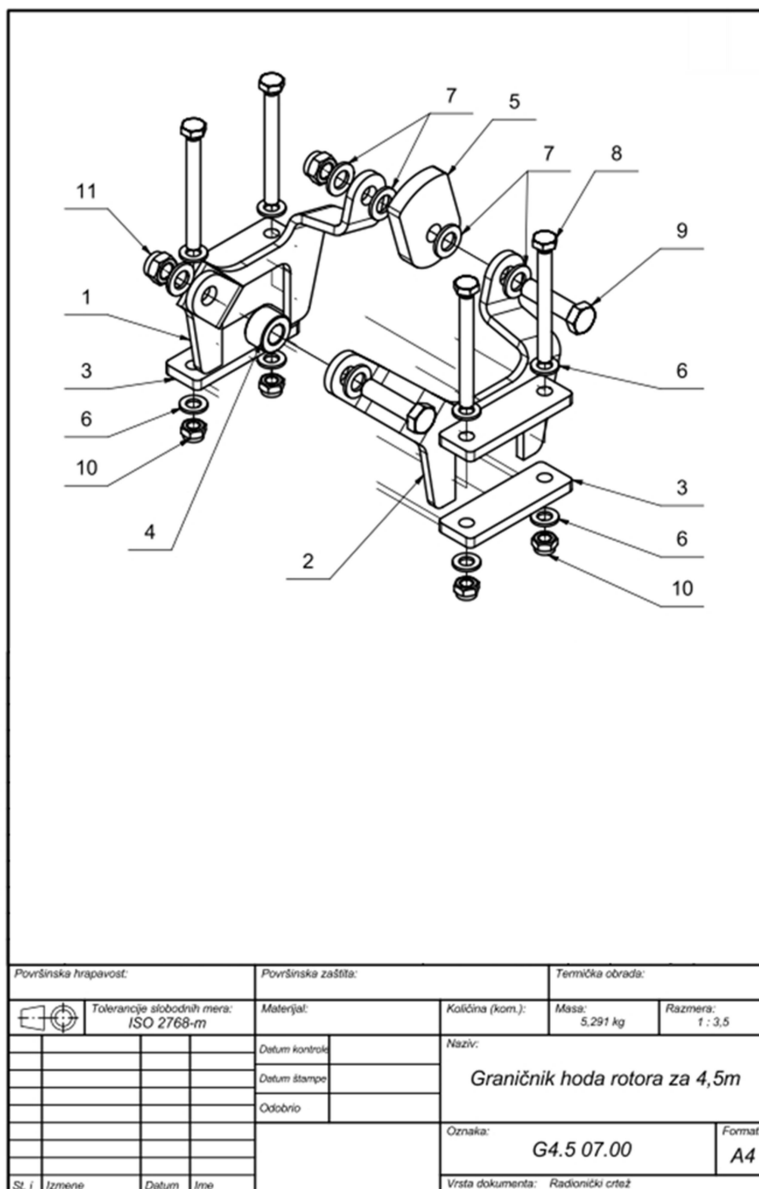
Poz	Description	Code	Quantity
1	Main frame and front hitch	G6 01.00/G6 02.00	1
2	Left wing 4.5m	G4.5 03.00 L	1
3	Right wing 4.5m	G4.5 03.00 D	1
4	Shaft for wings	G6 00.03.00	4
5	Hydraulic cylinder for transport position-left	G6 10.01 L	1
6	Hydraulic cylinder for transport position-right	G6 10.01 D	1
7	Lighting foldable complete	G6 11.00	1
8	Rotor assembly with carrier 6m	G6 04.00	2
9	Rotor assembly with carrier 4.5m	G4.5 04.00	2
10	Right disc carrier assembly 6m	G6 05.00 D	1
11	Left disc carrier assembly 6m	G6 05.00 L	1
12	Right disc carrier assembly 4.5m	G4.5 05.00 D	1
13	Left disc carrier assembly 4.5m	G4.5 05.00 L	1
14	Right cover	G4.5 08.02	1
15	Left cover	G4.5 08.03	1
16	Right inner cover	G6 08.04	1
17	Left inner cover	G6 08.05	1
18	Rotor stroke limiter	G6 07.00	4
19	Rotor stroke limiter 4.5	G4.5 07.00	4
20	Washer M30	DIN 125	14
21	Hex-Head Bolt M30 x 120	DIN 931	1
22	Hex Nut M30	DIN 985	9



Poz	Description	Code	Quantity
1	Rotor carrier 4.5m	G4.5 04.01.00	1
2	Rotor - welded assembly 4.5m	G4.5 04.02.02.01	1
3	Knife for rotor	G6 04.02.01	16
4	Bearing UCF_210	G6 04.02.02	2
5	Washer M12	DIN 125	64
6	Hex-Head Bolt M12 x 35	DIN 933	32
7	Countersunk Screw M16 x 50	DIN 7991	8
8	Hex Nut M12	DIN 985	32
9	Hex Nut M16	DIN 985	8

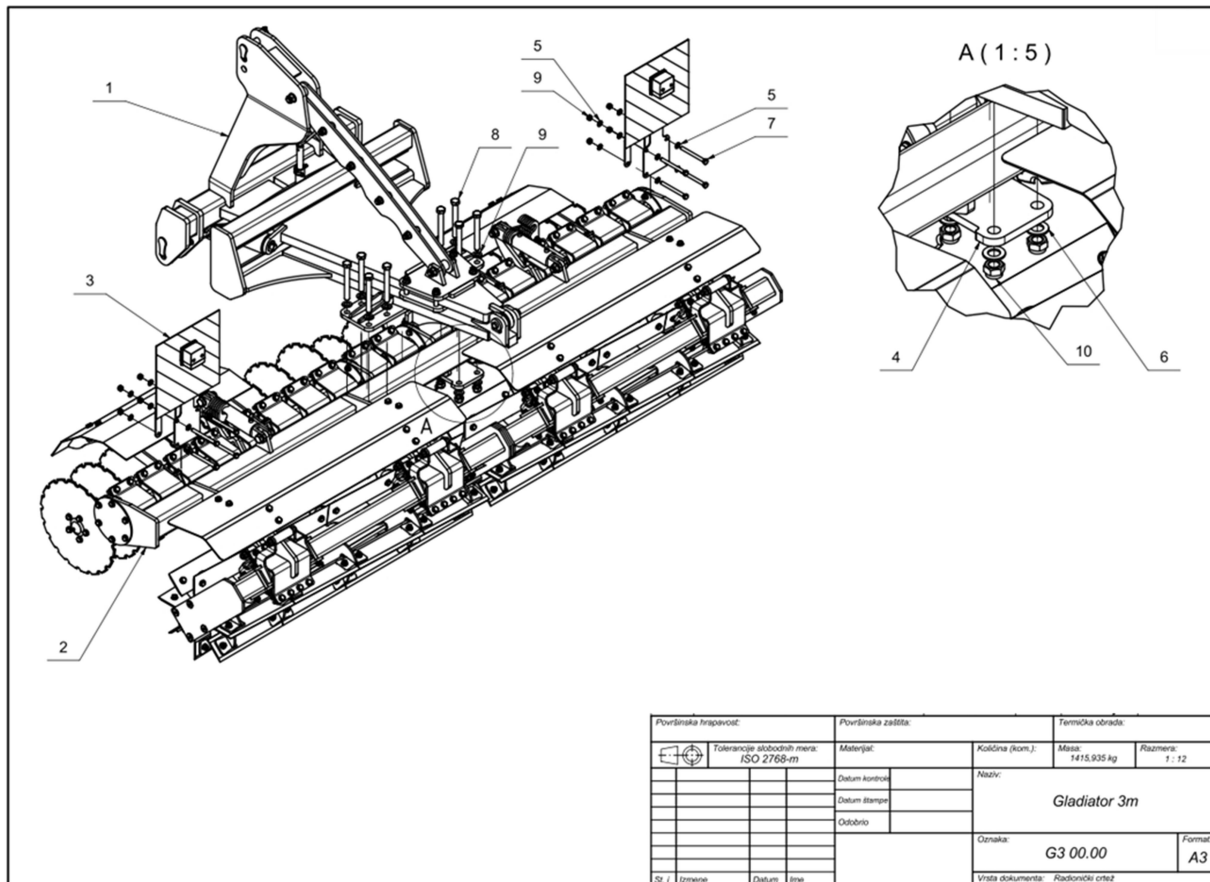


Poz	Description	Code	Quantity
1	Disc carrier	G6 06.00	26
2	Disc carrier assembly - right	G4.5 05.00 D	1
3	Disc carrier assembly - left	G4.5 05.00 L	1
4	Disc carrier - welded assembly	G6 06.01.00	1
5	Disc mounting plate	G6 06.01.01	1
6	Bearing for disc	G6 06.04	1
7	Disc	G6 06.03	1
8	Rubber Ø40 -110 mm	G6 06.02	4
9	Washer M12	DIN 125	13
10	Washer M22	DIN 125	1
11	Wide plain washer M27	DIN 9021	1
12	Hex-Head Bolt M12 x 25	DIN 933	5
13	Hex-Head Bolt M12 x 60	DIN 933	4
14	Hex Nut M12	DIN 985	4
15	Hex Nut M22	DIN 985	1

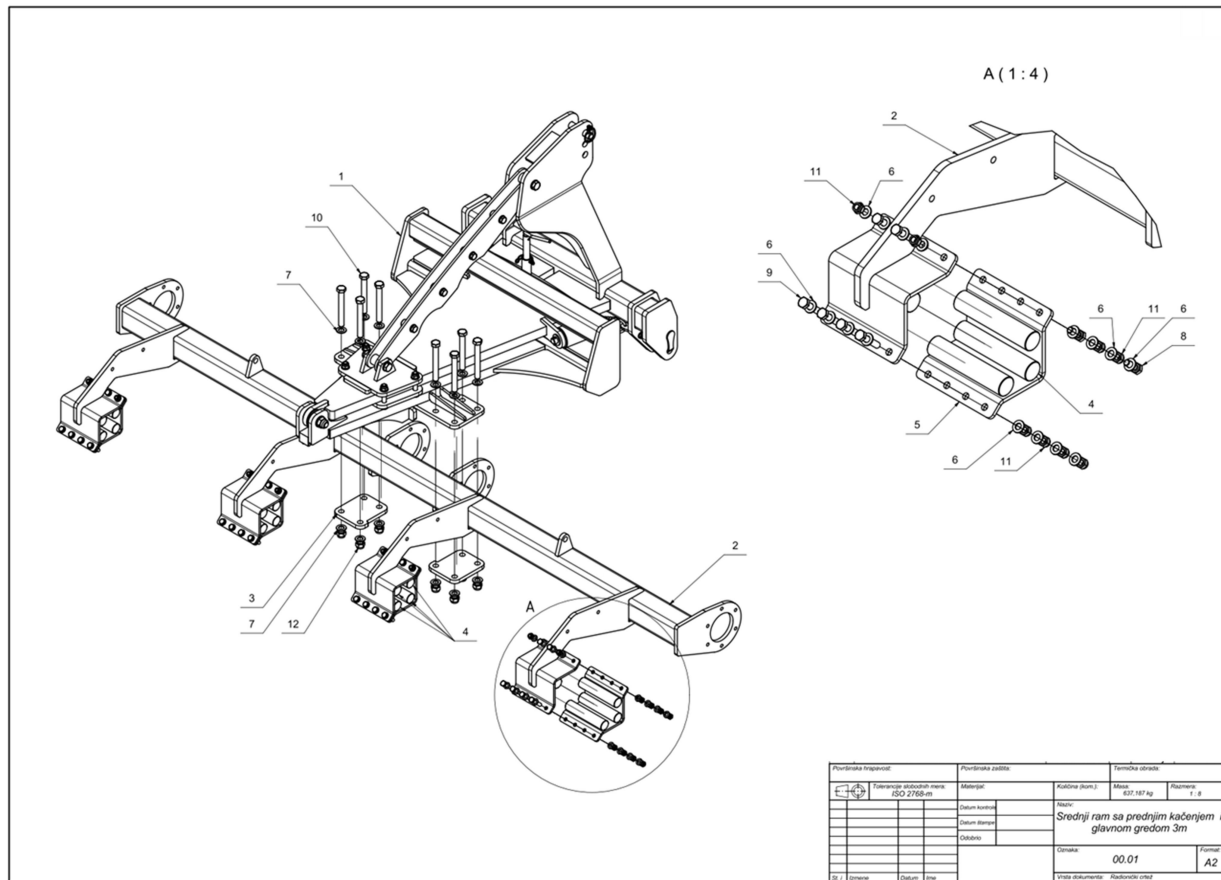


Poz	Description	Code	Quantity
1	Welded rotor stroke limiter-right	G6 07.02.00 D	1
2	Welded rotor stroke limiter-left	G6 07.02.00 L	1
3	Plate 125x40x10	G6 07.02.01	2
4	Bushing Ø35 x Ø17,5 - 21	G4.5 07.05	1
5	Plate Ø114 x Ø16,5 x 15	G6 07.04	1
6	Washer M12	DIN 125	8
7	Washer M16	DIN 125	6
8	Hex-Head Bolt M12 x 120	DIN 933	4
9	Hex-Head Bolt M16 x 60	DIN 931	2
10	Hex Nut M12	DIN 985	4
11	Hex Nut M16	DIN 985	2

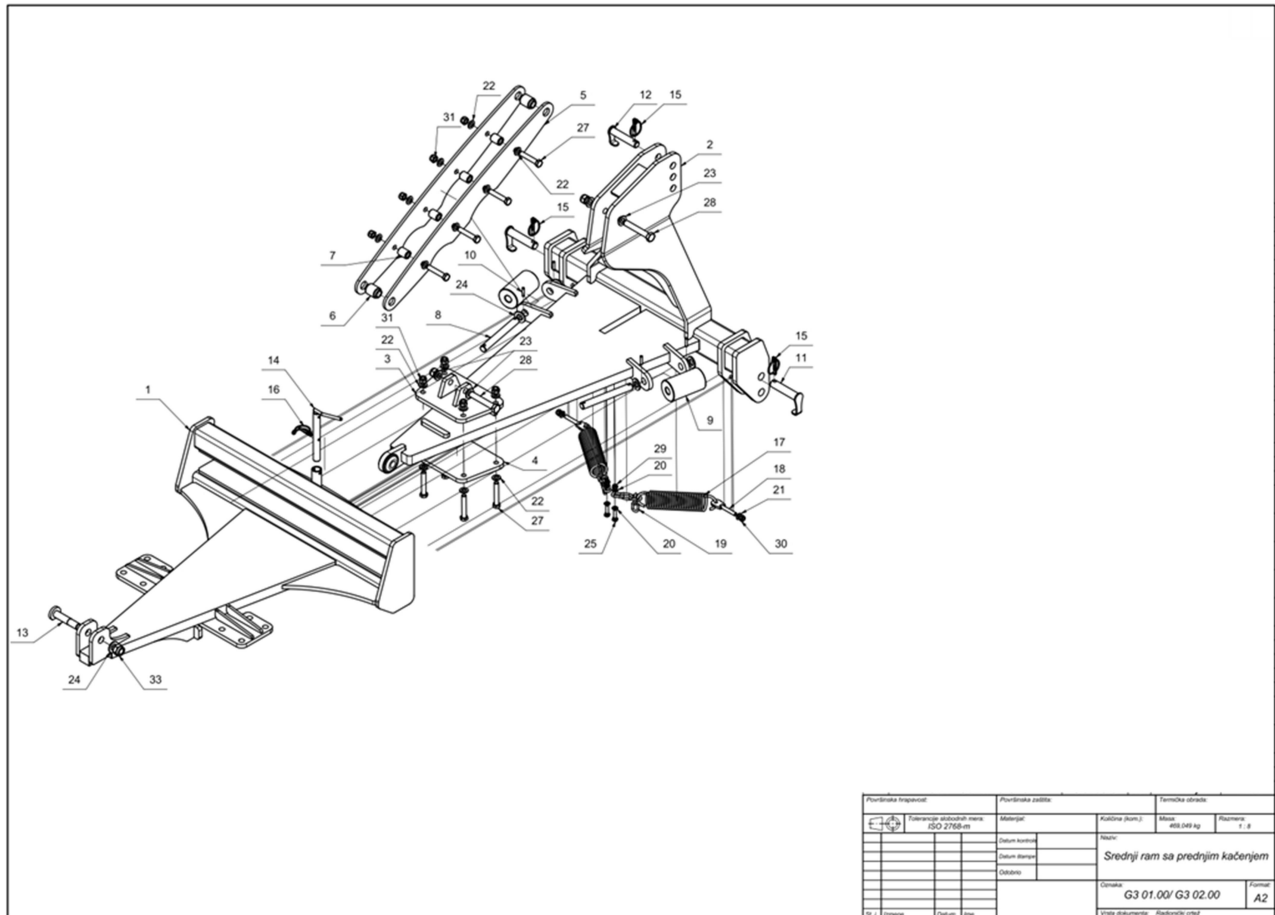
GLADIATOR 3m



Poz	Description	Code	Quantity
1	Main frame and front hitch	G3 01.00/G6 02.00	1
2	The main supporting frame 3m	G3 03.00	1
3	Lighting foldable complete 3m	G3 10.00	2
4	Plate 170x150x20	G3 01.11	2
5	Washer M12	DIN 125	16
6	Washer M20	DIN 125	16
7	Hex-Head Bolt M12 x 130	DIN 931	8
8	Hex-Head Bolt M20 x 160	DIN 931	8
9	Hex Nut M12	DIN 985	8
10	Hex Nut M20	DIN 985	8

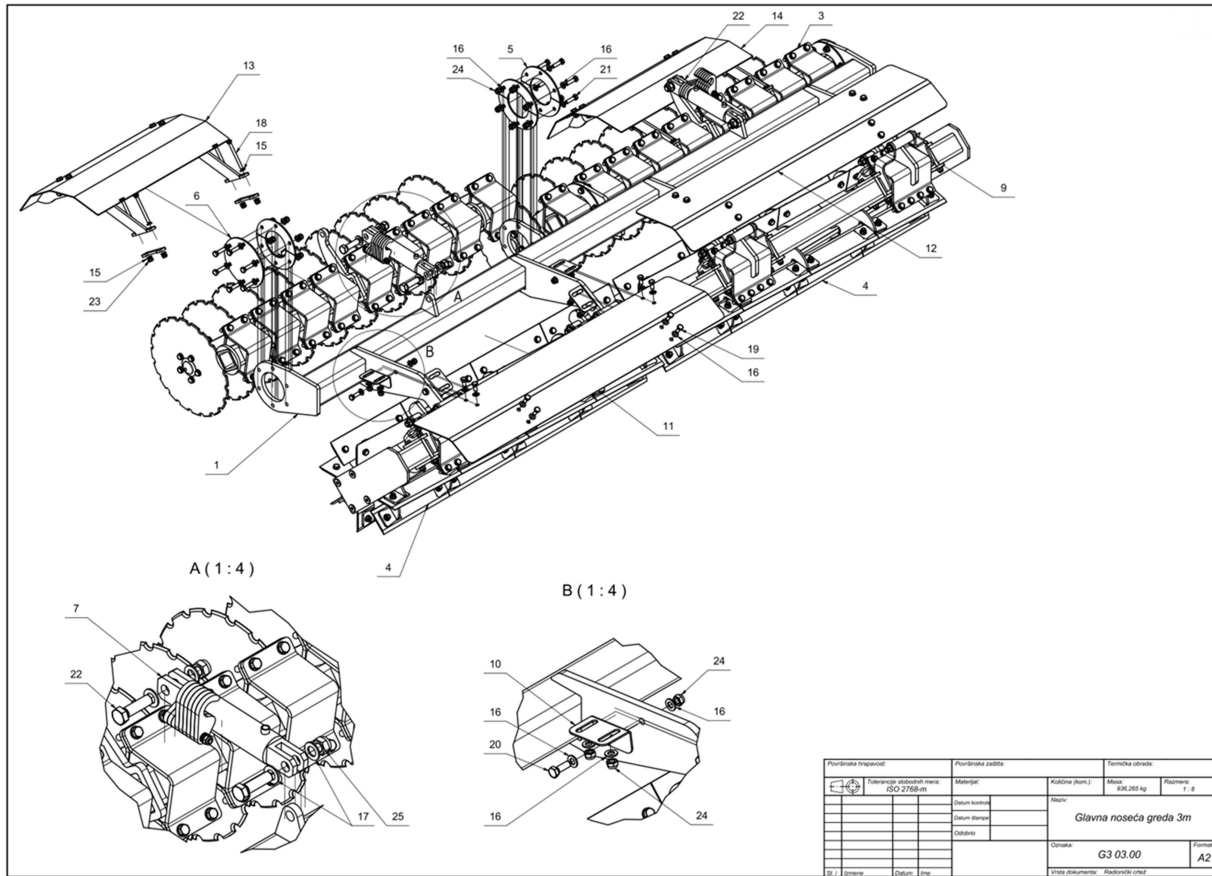


Poz	Description	Code	Quantity
1	Main frame and front hitch	G3 01.00/G6 02.00	1
2	The main supporting frame 3m	G3 03.00	1
3	Plate 170x150x20	G3 01.11	2
4	Rubber Ø40 - 190 mm	G6 03.03	16
5	Rotor carrier mounting plate	G6 03.01.05	4
6	Washer M12	DIN 125	64
7	Washer M20	DIN 125	16
8	Hex-Head Bolt M12 x 35	DIN 933	8
9	Hex-Head Bolt M12 x 60	DIN 933	24
10	Hex-Head Bolt M20 x 160	DIN 931	8
11	Hex Nut M12	DIN 985	32
12	Hex Nut M20	DIN 985	8

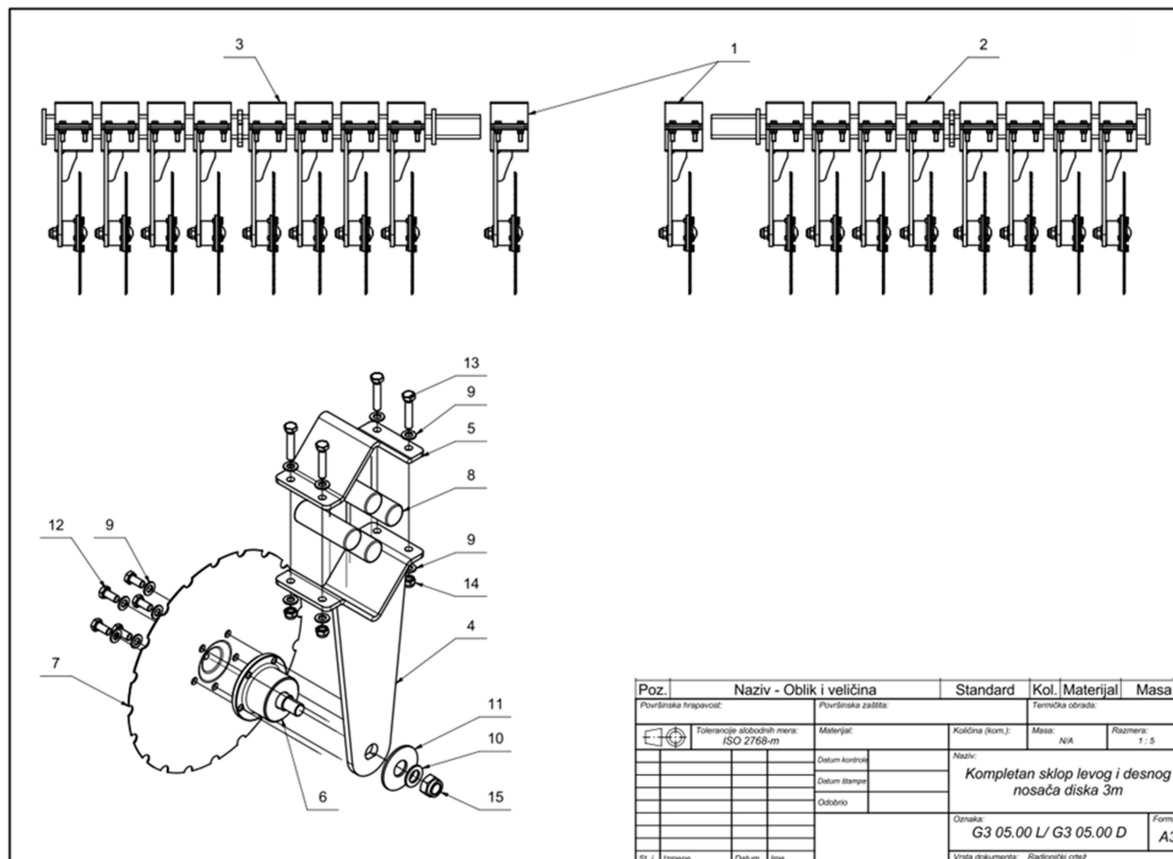


Poz	Description	Code	Quantity
1	Main frame 3m	G3 01.00	1
2	Front hitch- welded part	G6 02.01.00	1
3	Stronghold carrier- welded part	G6 02.02.01.00	1
4	Trapezoid plate for stronghold	G6 02.02.01.01	1
5	Stronghold plate-front hitch	G6 02.03.01	2
6	Bushing Ø40 x Ø21 - 54mm	G6 02.03.02	2
7	Bushing Ø30 x Ø17 - 38mm	G6 02.03.03	4
8	Shaft Ø25 - 215 mm	G6 02.05	2
9	Plastic roller Ø81 - 140 mm	G6 02.04	2
10	Spring type straight pin 8x35	DIN EN ISO 13337	4
11	Lower hitch pin front	G3 00.06.00	2
12	Upper hitch pin front	G3 00.07.00	1
13	Middle frame coupling pin	G3 00.08.00	1
14	Front suspension positioning pin	G6 00.04.00	1
15	Linch pin 9,5x45	DIN 11023	3
16	Linch pin for tube Ø8	DIN 11023	1
17	Front suspension spring	G6 12.01	2
18	Front Suspension Spring Spanners	G6 00.05.00	2
19	Front suspension chain	G6 12.04	2
20	Washer M10	DIN 125	4
21	Washer M12	DIN 125	2
22	Washer M16	DIN 125	16
23	Washer M20	DIN 125	4

24	Washer M24	DIN 125	5
25	Hex-Head Bolt M10 x 40	DIN 933	2
26	Hex-Head Bolt M16 x 85	DIN 931	4
27	Hex-Head Bolt M16 x 95	DIN 931	4
28	Hex-Head Bolt M20 x 120	DIN 931	2
29	Hex Nut M10	DIN 985	2
30	Hex Nut M12	DIN 985	2
31	Hex Nut M16	DIN 985	8
32	Hex Nut M20	DIN 985	2
33	Hex Nut M24	DIN 985	1



Poz	Description	Code	Quantity
1	The main supporting frame	G3 03.00	1
2	Disc carrier assembly- right	G3 05.00 D	1
3	Disc carrier assembly- left	G3 05.00 L	1
4	Rotor assembly with carrier	G6 04.00	2
5	Half flange	G3 00.02	12
6	Side cover/end flange	G3 00.01	2
7	Hydraulic cylinder for disc depth-right	G6 10.02 D	1
8	Hydraulic cylinder for disc depth-left	G6 10.02 L	2
9	Rotor stroke limiter	G6 07.00	4
10	The lid carrier	G6 08.01	8
11	Right cover	G3 08.02	1
12	Left cover	G3 08.03	1
13	Rear right fender	G6 08.06.00 D	1
14	Rear left fender	G6 08.06.00 L	1
15	Washer M10	DIN 125	16
16	Washer M12	DIN 125	99
17	Washer M20	DIN 125	8
18	Hex-Head Bolt M10 x 110	DIN 931	8
19	Hex-Head Bolt M12 x 25	DIN 933	16
20	Hex-Head Bolt M12 x 35	DIN 933	8
21	Hex-Head Bolt M12 x 45	DIN 933	24
22	Hex-Head Bolt M20 x 70	DIN 931	4
23	Hex Nut M10	DIN 985	8
24	Hex Nut M12	DIN 985	48
25	Hex Nut M20	DIN 985	4



Poz	Description	Code	Quantity
1	Disc carrier	G6 06.00	18
2	Disc carrier assembly - right	G3 05.00 D	2
3	Disc carrier assembly - left	G3 05.00 L	2
4	Disc carrier - welded assembly	G6 06.01.00	1
5	Disc mounting plate	G6 06.01.01	1
6	Bearing for disc	G6 06.04	1
7	Disc	G6 06.03	1
8	Rubber Ø40 -110 mm	G6 06.02	4
9	Washer M12	DIN 125	13
10	Washer M22	DIN 125	1
11	Wide plain washer M27	DIN 9021	1
12	Hex-Head Bolt M12 x 25	DIN 933	5
13	Hex-Head Bolt M12 x 60	DIN 933	4
14	Hex Nut M12	DIN 985	4
15	Hex Nut M22	DIN 985	1